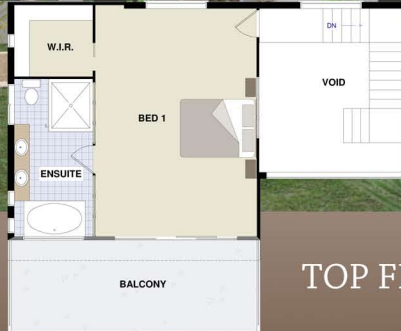


TORQUAY



Torquay



TOP FLOOR

HOUSE FEATURES

- 4 Bedrooms
- Living Room
- Designer Kitchen
- Bathroom
- Meals
- Designer Ensuite
- Portico/Courtyard
- Large Patio/BBQ
- Balcony

HOUSE AREAS

LOWER FLOOR
 Living 200.4m²
 Patio 40.8m²
 Crt Yard 8.0m²
 Garage 50.8m²
 UPPER FLOOR
 Living 51.6m²
 Balcony 18.8m²
 TOTAL AREA 370.4m²

WIDTH x LENGTH
 21.8m x 16.8mm



BOTTOM FLOOR